

■ M/X Series



Vytek

■ VYTEK LASER MARKING SYSTEMS

Whether you are marking or engraving graphics, text, bar codes, serial numbers, or a combination, M/X Series Large Field Laser Marking Systems will handle the job quickly and efficiently.

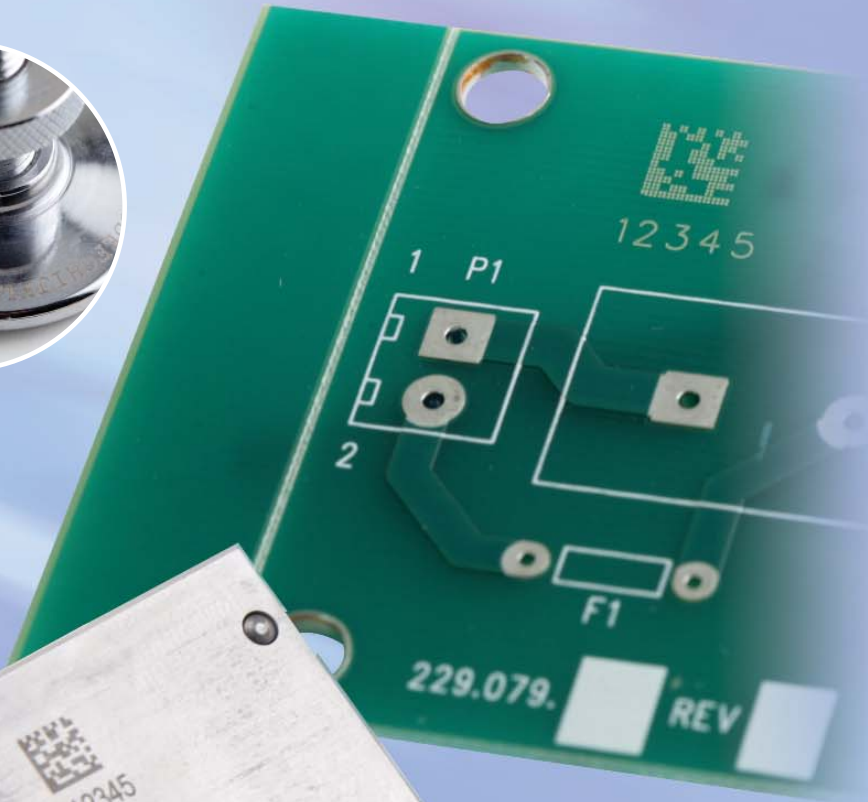


**Free Vytek
Engineering
Evaluation -
The Proof is
In the Pudding**



Send sample workpieces to Vytek for testing and engineering review. Vytek will:

- Laser mark or engrave your workpiece for your review
- Comment on observed results
- Estimate processing speed and throughput
- Offer suggestions intended to optimize performance.



**Easy to Use
Keypad**

**The MX Series Large Field Laser
Marking Systems eliminate the need for
expensive material handling equipment and
offers these benefits:**

- Flexible Solution Available with Fiber, YAG (DPSS), or CO2 Laser
- Laser power choices from 10 to 100 Watts
- Large Working Field Up To 610mm x 1295mm - Choose from 3 Sizes
- Easy-To-Use Flat Bed Architecture
- Writing Speed: up to 3810 mm/sec (150 IPS)
- Superior Batch Processing Throughput
- Easy Set-Up for Processing Multiple Parts
- Scaleable solution





Suitable for Metals, Plastics, Glass, Ceramics, Silicon, Leather, Denim, Wood, Granite, Marble, Tile, Cardboard, Labels and many other materials.

**Large Working Field,
High Throughput &
Flexibility**



The M/X Series is a complete and flexible solution, featuring:

- Adjustable, rugged flat bed table with up to nine inches clearance
- Auto focus
- Flying spot optics
- Quick change lens assembly
- Windows print driver compatibility
- Ethernet interface




Give us a call at 978-342-9800 to initiate your free Vytech Engineering Evaluation.



M/X Series

DANGER

LASER RADIATION-AVOID EYE
OR SKIN EXPOSURE TO DIRECT
OR SCATTERED RADIATION



CO₂ LASER
(AND OPTIONAL LASER DIODE)
WAVELENGTH: 10.6 μ (630-680 nm DIODE)
MAX. OUTPUT: 150 W (5 mW DIODE)
CLASS IV LASER
Yb: FIBER LASER / Pulse duration : 40ns/Wavelength:
1060nm / Maximum output : 150w

M/X Series System Specifications

Dimensions	MX2412	MX3624	MX5124
Depth:	33" (838 mm)	46" (1168 mm)	46" (1168 mm)
Width:	39" (991 mm)	49" (1245 mm)	65" (1651 mm)
Height:	39" (991 mm)	42" (1067 mm)	42" (1067 mm)
Working Field			
Work Area:	12" x 24" (305x610)	24" x 36" (610 x 914)	24" x 51" (610 x 1295)
Drive Type:	All Models Feature a High Performance Belt Drive		
Available Lasers (wavelengths)			
50W CW fiber laser (1070nm-1090nm) - air cooled			
15W ND:YAG (1064nm) diode-pumped solid state laser - air cooled			
10W to 100W CO ₂ laser (10.6micron) - air cooled up to 65 W			

© Vytek, 2007 Vinyl Technologies Inc. All Rights Reserved. Vytek's continuing program of product design, engineering and improvement make all specifications subject to change at Vytek's discretion. All mark, copyrights and images are the property of their respective owners.



Vytek
— VYTEK LASER MARKING SYSTEMS

M/X Series

Vytek Tel: 978-342-9800
195 Industrial Rd Fax: 978-342-0606
Fitchburg, MA 01420 sales@vy-tek.com

www.vy-tek.com